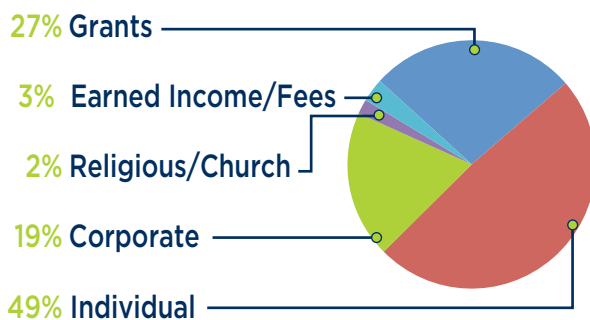


Mission: To be a medical home reflecting the heart of Christ by offering the highest level of health care to those in our community who need it most.

CONTRIBUTIONS
\$2,519,140

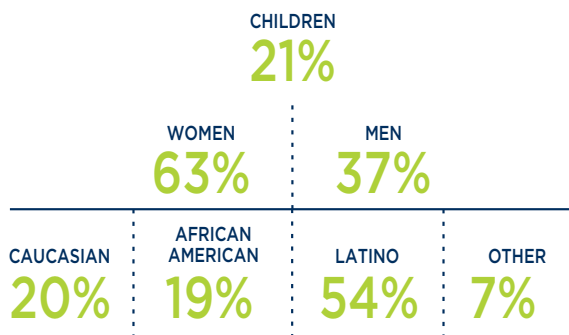


ALL GRACE PATIENTS HAVE ACCESS TO



- CASE MANAGEMENT/SOCIAL SERVICES
- DIAGNOSTIC TESTING
- MENTAL HEALTH COUNSELING
- PRESCRIPTION MEDICATIONS/VACCINES
- PREVENTATIVE SCREENINGS
- PRIMARY CARE VISITS
- SPECIALTY VISITS
- SPIRITUAL CARE
- WELLNESS & PREVENTION

WHO GRACE SERVES



11,070

PATIENT ENCOUNTERS



1,027

SPIRITUAL CARE & MENTAL HEALTH VISITS



\$1,100,000+

AVOIDED COSTS TO LOCAL EMERGENCY ROOMS



\$3,629,940

PRESCRIPTIONS DONATED AND DISPENSED TO PATIENTS



20,984

VOLUNTEER HOURS



3,665

TOTAL PATIENTS ENROLLED SINCE 2010