

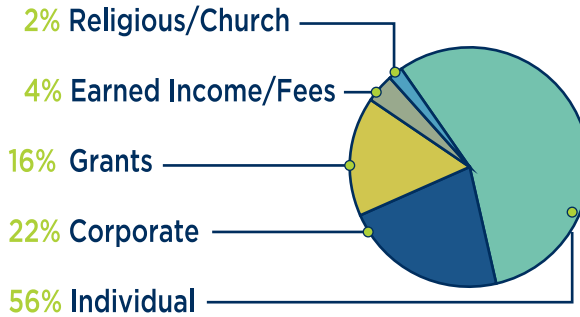
Mission: To provide comprehensive, excellent medical care for the whole person through an ongoing relationship for the underserved of Orange County, Florida.

CONTRIBUTIONS

\$1,735,785

87% Directly to Patient Care

13% Supporting Admin Expenses

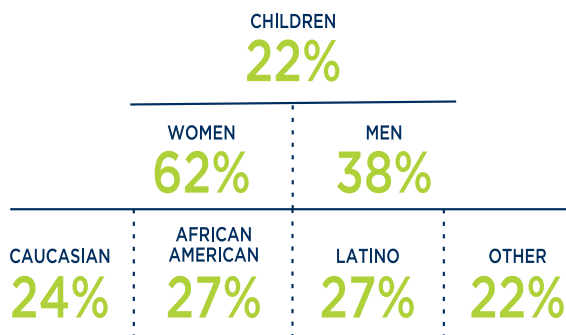


A TYPICAL GRACE PATIENT RECEIVES



- PRESCRIPTION MEDICATIONS
- PRIMARY CARE VISITS
- SPECIALTY VISITS
- DIAGNOSTIC TESTING
- PREVENTATIVE SCREENINGS
- MENTAL HEALTH COUNSELING
- SPIRITUAL CARE
- WELLNESS PREVENTIONS
- CASE MANAGEMENT/SOCIAL SERVICES

WHO GRACE SERVES



2,630

TOTAL PATIENTS ENROLLED SINCE 2010



11,032

PATIENT VISITS IN 2015



745

SPIRITUAL CARE & MENTAL HEALTH VISITS



\$1,000,000+

AVOIDED COSTS TO LOCAL EMERGENCY ROOMS



\$2,177,309

PRESCRIPTIONS DONATED AND DISPENSED TO PATIENTS



14,270

VOLUNTEER HOURS BY 150 VOLUNTEERS & 19 PAID STAFF

